

CULPEPPER MANOR

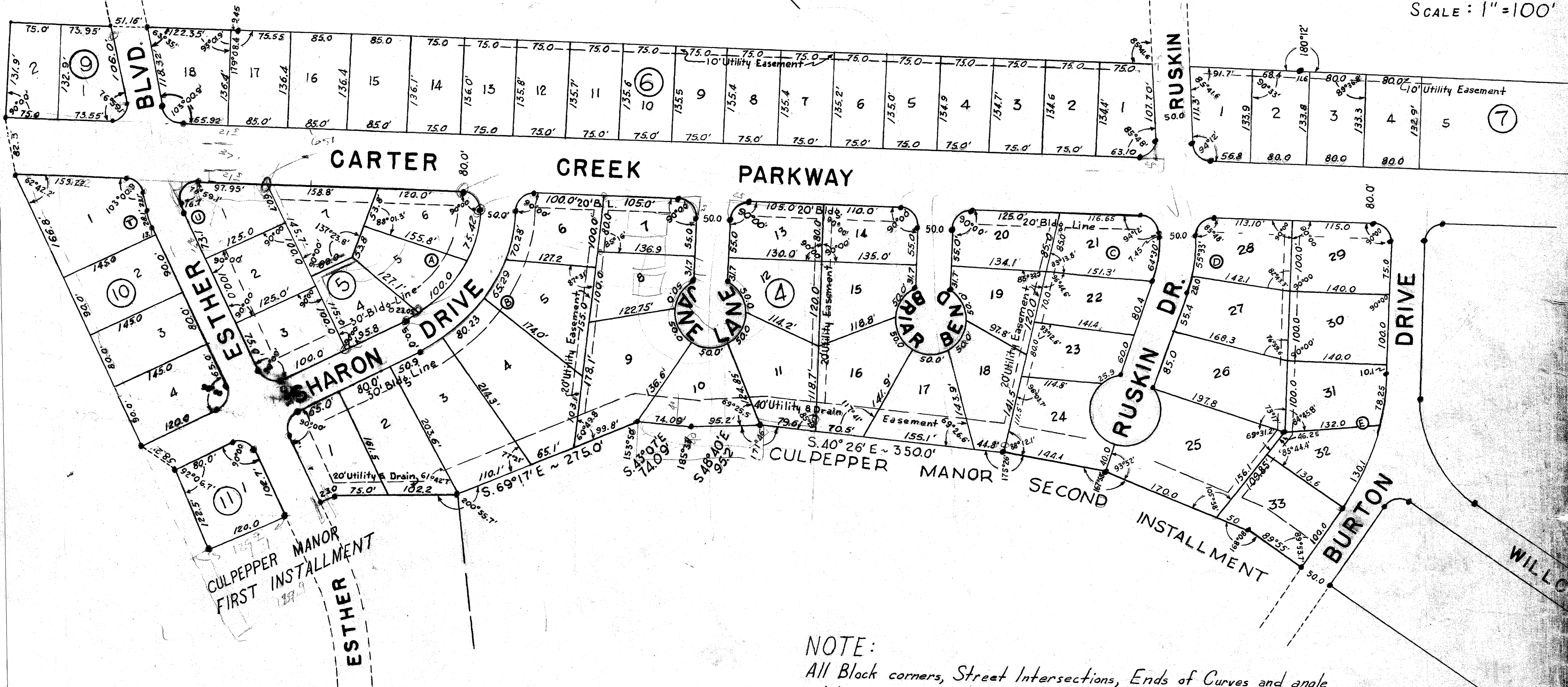
THIRD INSTALLMENT

115

WEST HALF

D.R. VOL. 205, PG. 441 JUNE 9, 1960

SCALE: 1" = 100'



NOTE:

All Block corners, Street Intersections, Ends of Curves and angle points are marked with Conc Monuments.

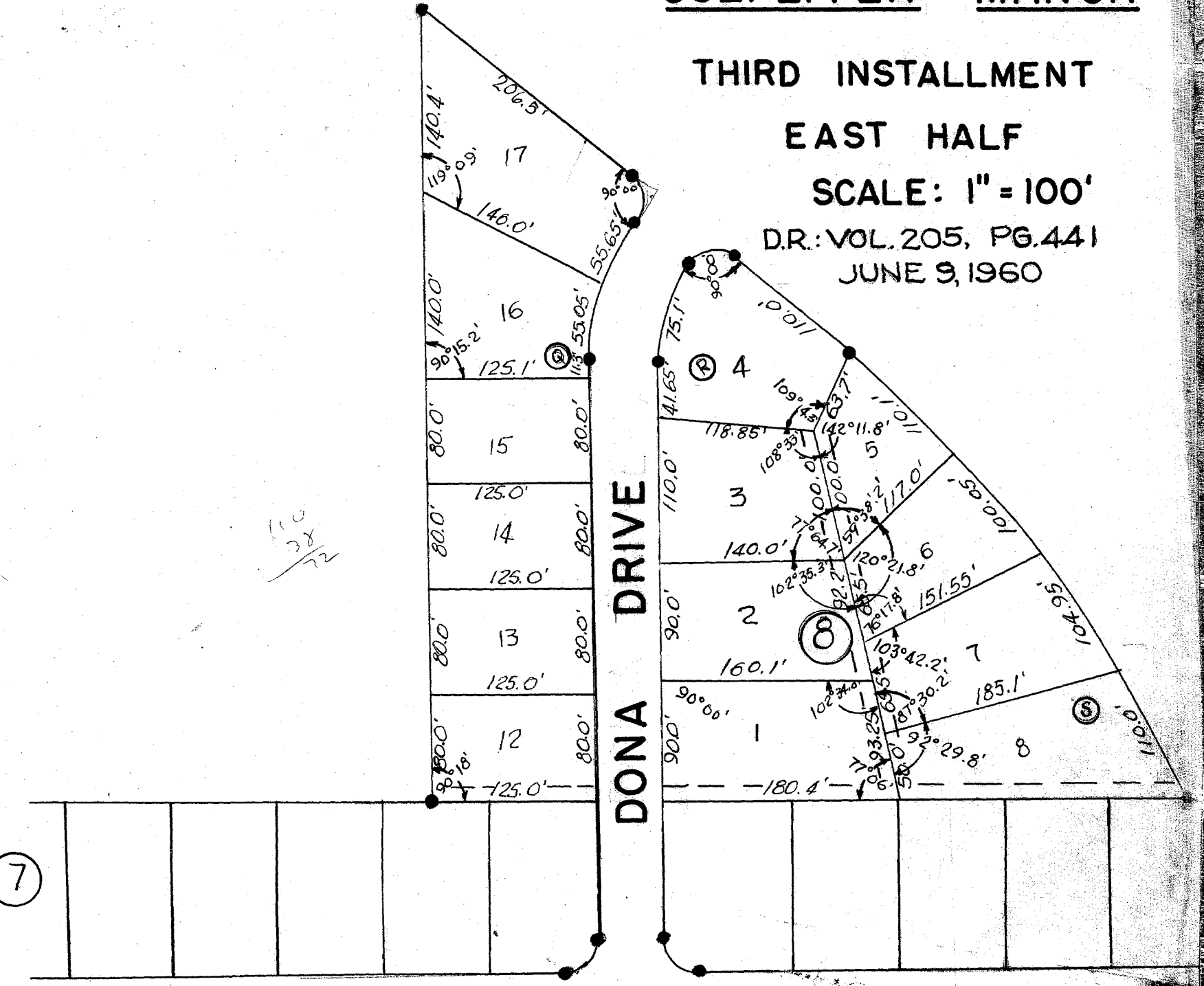
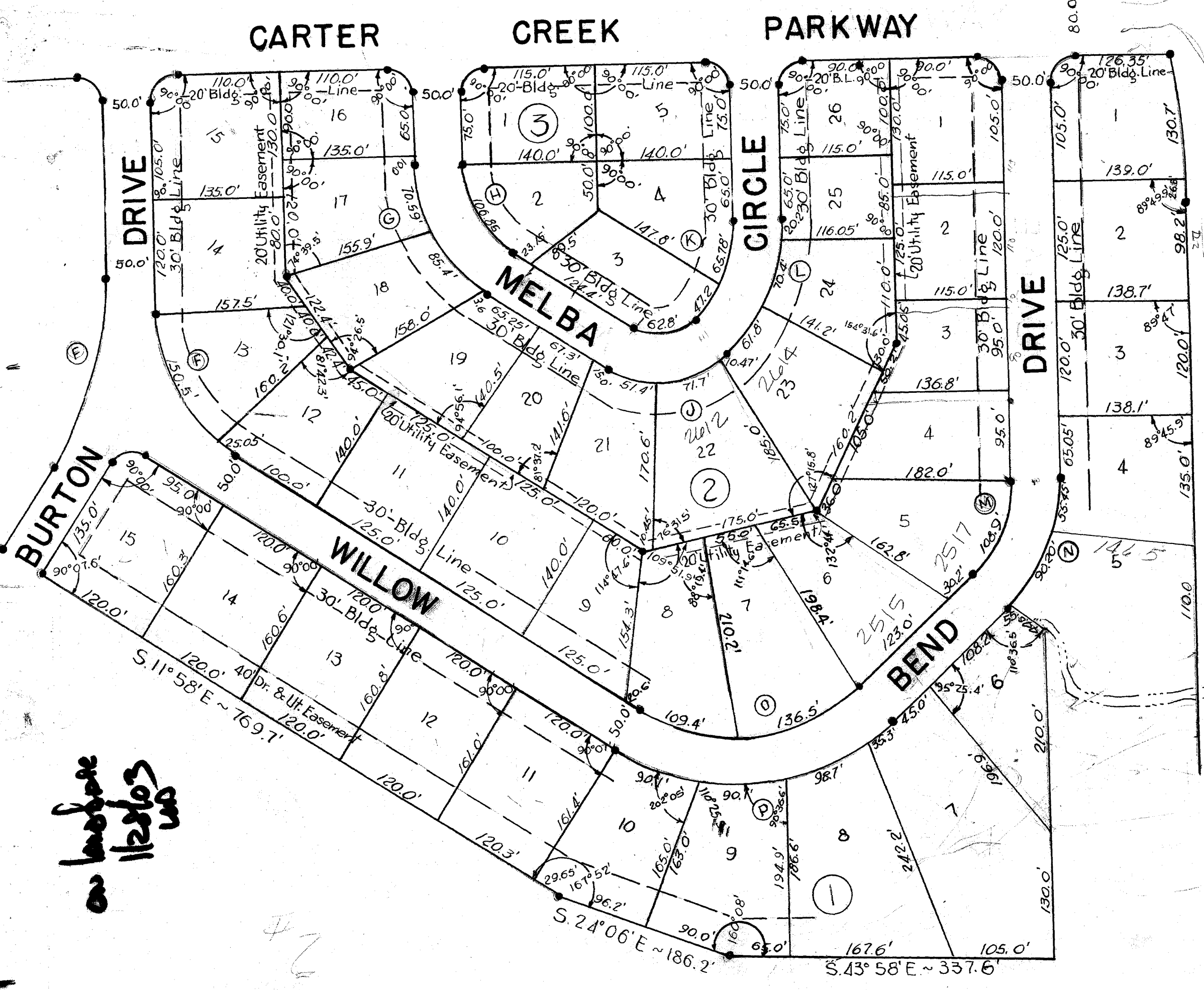
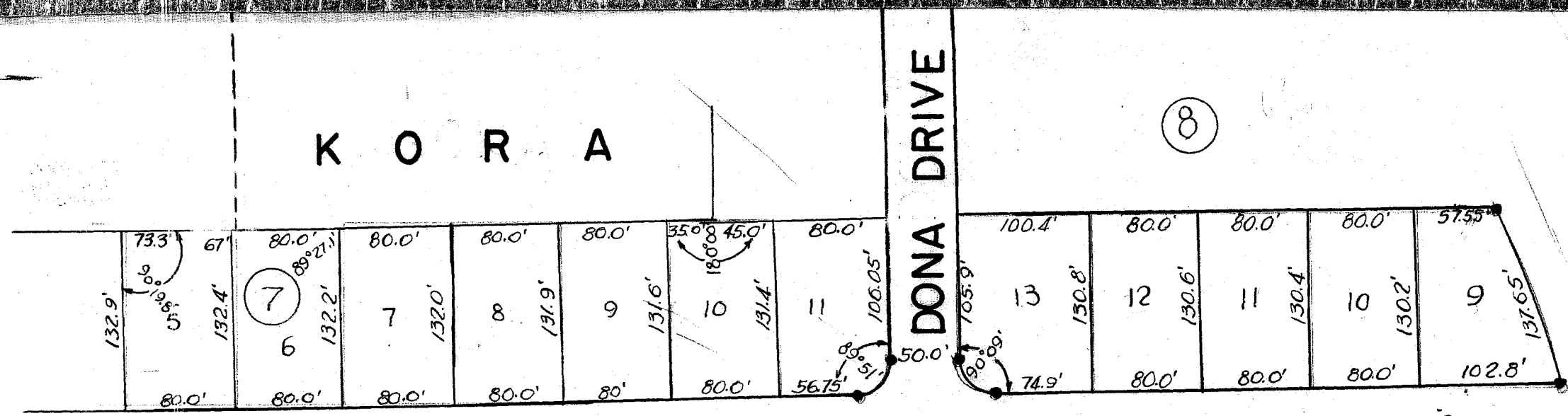
All lot corners are marked with steel rods.

All distances shown on Curves are chord distances.

on balance  
WD  
1/28/60

CULPEPPER <sup>114</sup> MANOR

THIRD INSTALLMENT  
EAST HALF  
SCALE: 1" = 100'  
D.R.: VOL. 205, PG. 441  
JUNE 9, 1960



	Δ	D	T	R
A	62°42.1'	31°40.4'	111.5'	183.03'
B	62°42.1'	24°46.8'	141.96'	233.03'
C	21°33.2'	33°50.4'	32.7'	171.80'
D	21°33.2'	26°04.6'	42.22'	221.80'
E	32°57'	15°50'	107.35'	362.99'
F	57°05.9'	32°39.6'	96.65'	177.86'
G	57°06'			
H	57°06'			
I	77°52'			
J	77°52'			
K	45°00'	40°23.2'	60.0'	144.85'
L	45°00'	29°44.2'	81.82'	194.85'
M	46°07.7'		31.45'	173.86'
N	46°07.7'	47°37.0'		123.86'
O	76°47'	36°25.2'	126.77'	160.00'
P	76°47'	27°32.8'	166.39'	210.00'
Q				
R				
S				
T				
U				